

KS"32' 1Jv4§ X ÄLš ¶ Å6u Ñ ÝL\$ @ ì

H H z y

.....	3
.....	3
.....	5
.....	8
.....	8
.....	16
.....	23
.....	137

()

()

()

2012

	237161
	www.600496.com
	600496@jgsteel.cn

()

2012

()	0.18	0.25	-28.00
()	0.19	0.25	-24.00
()	0.18	0.25	-28.00
(%)	5.29	8.71	3.42
	-263,731,313.32	165,355,572.41	-259.49
	-0.45	0.28	-260.71

2

	-8,564,855.48
	2,048,963.29
	101,425.84
	-813,956.69
	1,075,165.15
	10,137.44
	-6,143,120.45

()

()

1

				49,407		
		(%)				
		33.40	195,940,729	0	0	181,625,000
		3.39	19,900,978	0	0	

		2.04	11,958,290	350,800	0	
		1.68	9,882,742	8,065,758	0	
		1.37	8,009,789	1,000,000	0	
		1.36	8,000,000	0	0	
		1.23	7,237,362	7,237,362	0	
		1.10	6,433,832	364,588	0	
008C CT001						
		1.08	6,349,109	6,349,109	0	

2012

		0.76	4,438,329	979,149	0	
			195,940,729		195,940,729	
			19,900,978		19,900,978	

()

		240,000	2,727,329	0	2,967,329		360,000

()

2012

	2,511,582,750.72	2,104,863,125.12	16.19	-1.58	-3.90	2.02
	15,878,909.27	12,125,969.56	23.63	2.96	-5.68	6.99
	846,649,954.04	720,507,164.46	14.90	-38.46	-40.01	2.21
	510,516,822.15	424,020,398.57	16.94	-18.86	-19.16	0.31
	825,440,792.28	693,321,844.14	16.01	50.88	49.19	0.95
	328,975,182.25	267,013,717.95	18.83	100.00	100.00	100.00
	15,878,909.27	12,125,969.56	23.63	2.96	-5.68	6.99

	241,132,533.77	148.34
	291,367,509.81	-36.06
	1,106,801,473.77	3.15
	283,311,110.79	-39.75
	361,318,888.73	180.88
	77,406,659.66	42.15
	133,337,684.50	-52.24
	32,785,798.96	262.12
	2,527,461,659.99	-1.55

			%	
	46,652,490.00	85,941,064.73	-45.72	
	192,102,192.40	77,003,598.86	149.47	
	237,171,229.70	162,885,421.96	45.61	
	12,395,024.73	20,337,378.59	-39.05	
	66,056,804.34	113,547,655.32	-41.82	
	715,252.81	350,144.20	104.27	

2012

	622,133,542.77	413,171,629.89	50.58	
	14,323,856.14	2,963,989.16	383.26	
	709,307.09	265,552.21	167.11	
	111,519,987.61	64,858,877.10	71.94	
	690,583,010.74		100.00	
	34,401,893.67	4,724,497.19	628.16	

	42,783,843.87	31,887,905.01	34.17	
	149,912,264.35	112,147,180.15	33.67	
	56,303,514.10	24,624,860.71	128.65	
	-2,234,942.09	6,917,109.32	-132.31	
	-7,942,353.86	1,917,919.44	-514.11	
	2,914,308.12	1,487,129.17	95.97	
	1,842,731.16	885,633.58	108.07	
	-404,301.81	-61,772.85	-554.50	

	1,984,029,456.98	2,919,215,273.91	-32.04	
	102,909.54		100.00	
	185,541,917.90	121,723,155.73	52.43	

2012

		1,470,000.00	-100.00	
	581,722.12	101,548.77	472.85	
		98,983,554.72	-100.00	
	88,388,214.39	55,653,473.43	58.82	
	151,408,335.97	348,863,701.56	-56.60	
	700,000,000.00		100.00	
	10,375,000.00		100.00	
	800,461,907.99	299,090,382.76	167.63	
	81,974,800.98	42,061,822.19	94.89	
	-454,181.08	-183,798.53	-147.11	

1

100%	22,059.00	85.50%	694.42
	312.50		-96.82
	1,192.80		
	100.00		5.50
	4,000.00		
	9,000.00	1,664.93	
	29,500.00	2148.75	-324.22
	12,600.00	2686.19	

2012	4	17		2011		2011
				2011	586,566,000	10
		0.70			41,059,620.00	2011

" " "

"

2011

2011

2011

2012 4 17

2011

2011

2011 586,566,000

10

0.70

41,059,620.00

2011

2012 5 18

<http://www.sse.com.cn>

2011

2012

5 23

2012 5 24

2012 5 30

2003

830

8.33%

	<p>10 0.70</p> <p>41,059,620.00</p> <p>2011</p> <p>6.73 /</p> <p>6.66 /</p> <p>12.82 / 12.75 /</p>
	<p>22</p>
	<p>1</p> <p>1 X=10.15 2010</p> <p>6.73</p> <p>2 r 2010</p> <p>4 3</p> <p>1 2.6%</p> <p>2 3.1%</p> <p>3 3.73%</p> <p>3 2010 7 26</p> <p>30</p> <p>14.68%</p> <p>2</p> <p>1 x=12.82</p> <p>2 r 2011</p> <p>3.4 2</p> <p>1.4 5.09%</p> <p>2.4 8.72%</p> <p>3 2011 7 8</p> <p>30</p> <p>3.08%</p>
	<p>2012 1 -6</p> <p>625.95</p>

1

2

3

2

	0
A	0
	2,198.00
B	47,465.79
A+B	47,465.79
(%)	24.57
C	0
70 D	31,367.00
50 E	0
C+D+E	31,367.00

3

6

	4

7

8

9

		2012 1 5	www.sse.com.cn
		2012 1 7	www.sse.com.cn
		2012 1 10	www.sse.com.cn
		2012 1 14	www.sse.com.cn
		2012 1 17	www.sse.com.cn

100%		2012 1 17	www.sse.com.cn
2012		2012 1 17	www.sse.com.cn
		2012 2 16	www.sse.com.cn
		2012 3 1	www.sse.com.cn
A		2012 3 3	www.sse.com.cn
		2012 3 10	www.sse.com.cn
2012		2012 3 10	www.sse.com.cn
2011		2012 3 20	www.sse.com.cn
		2012 3 20	www.sse.com.cn
		2012 3 20	www.sse.com.cn
2011		2012 3 22	www.sse.com.cn
2011		2012 3 27	www.sse.com.cn
		2012 3 28	www.sse.com.cn
		2012 3 28	www.sse.com.cn
		2012 3 28	www.sse.com.cn

		2012 3 28	www.sse.com.cn
		2012 3 28	www.sse.com.cn
		2012 3 28	www.sse.com.cn
2011		2012 3 28	www.sse.com.cn
2011		2012 4 18	www.sse.com.cn
		2012 4 23	www.sse.com.cn
		2012 4 23	www.sse.com.cn
2011		2012 5 3	www.sse.com.cn
2011		2012 5 18	www.sse.com.cn
		2012 6 1	www.sse.com.cn
		2012 6 6	www.sse.com.cn
		2012 6 29	www.sse.com.cn
2012	11	2012 6 30	www.sse.com.cn

2012 6 30

		107,569,571.34	113,006,937.01
		10,205,500.00	15,674,397.70
		94,186,572.59	110,763,988.09
		58,088,710.50	10,058,763.15
			97,372,757.06
		1,000,674,855.49	367,325,667.41
		288,830,393.86	277,010,733.16
		1,559,555,603.78	991,213,243.58
		1,331,656,078.41	1,090,053,424.37
		8,573,811.36	8,758,426.32
		116,854,776.62	119,298,753.56
		406,096.27	200,000.00

2012 06 30

		310,000,000.00	265,000,000.00
		200,000,000.00	258,671,255.00
		159,385,187.57	190,698,119.63
		10,422,148.74	6,439,637.55
		4,300,899.45	4,817,402.35
		6,956,635.75	7,848,894.96
		12,865,706.40	1,972,334.00
		43,577,611.05	74,001,109.00
		747,508,188.96	809,448,752.49
		1,636,362.00	1,963,635.00
		690,583,010.74	
		692,219,372.74	1,963,635.00
		1,439,727,561.70	811,412,387.49
		586,566,000.00	586,566,000.00
		431,259,117.56	424,999,617.56
		64,176,727.37	64,176,727.37
		519,874,461.64	347,895,785.88
		1,601,876,306.57	1,423,638,130.81
		3,041,603,868.27	2,235,050,518.30

		312,993,933.76	334,622,121.12
		266,231,956.93	299,624,091.52
		3,087,852.23	1,955,581.00
		3,042,346.24	2,805,048.15
		22,331,271.17	29,252,252.00
		32,430,451.37	12,088,144.88
		2,435,373.60	3,837,244.42
	“ ”		
	“ ”	228,752,076.76	132,205,639.63
		357,646.14	208,771.76
	“ ”	212,186,758.98	117,265,398.78
		621,604.82	174,778.82
		13,056.66	459,826.78
	“ ”	212,795,307.14	116,980,350.82
		-242,988.62	-575,586.66
	“ ”	213,038,295.76	117,555,937.48
		213,038,295.76	117,555,937.48

	231,533,546.70	346,319,617.03
	22,399,499.02	70,400,443.13
	253,933,045.72	416,720,060.16
	263,598,493.37	224,392,575.65
	25,868,645.39	20,047,663.38
	13,561,566.93	9,038,093.97
	693,118,115.04	327,558,626.50
	996,146,820.73	581,036,959.50
	-742,213,775.01	-164,316,899.34
	344,626,027.49	120,042,111.53
	331,153.85	563,270.53
	67,871,152.29	66,520,100.00
	412,828,333.63	187,125,482.06
	3,009,108.86	1,604,543.35
	104,260,000.00	
	223,715,000.00	81,750,000.00
	330,984,108.86	83,354,543.35
	81,844,224.77	103,770,938.71
	235,000,000.00	153,000,000.00
	700,000,000.00	
	935,000,000.00	153,000,000.00
	190,327,273.00	80,000,000.00
	63,807,336.13	32,781,353.11
	10,375,000.00	
	264,509,609.13	112,781,353.11
	670,490,390.87	40,218,646.89
	10,120,840.63	-20,327,313.74
	74,794,170.09	74,669,672.78
	84,915,010.72	54,342,359.04

2012 6

		1,984,029,456.98	2,919,215,273.91
		102,909.54	0.00
	()	43,271,361.81	38,722,147.29
		2,027,403,728.33	2,957,937,421.20
		1,807,137,380.49	2,399,499,836.58
		185,541,917.90	121,723,155.73
		138,350,565.64	111,109,946.79
	()	160,105,177.62	160,248,909.69
		2,291,135,041.65	2,792,581,848.79

	()							
	586,566,000.00	424,999,617.56			64,176,727.37		347,895,785.88	1,423,638,130.81
	586,566,000.00	424,999,617.56			64,176,727.37		347,895,785.88	1,423,638,130.81
“ ”		6,259,500.00					171,978,675.76	178,238,175.76
							213,038,295.76	213,038,295.76
		6,259,500.00					213,038,295.76	213,038,295.76
1								
2		6,259,500.00						6,259,500.00
3								
							-41,059,620.00	-41,059,620.00
1								
2								
3							-41,059,620.00	-41,059,620.00
4								
1								
2								
3								
4								
1				1,282,796.03				1,282,796.03
2				1,282,796.03				1,282,796.03
	586,566,000.00	431,259,117.56			64,176,727.37		519,874,461.64	1,601,876,306.57

2,881,119.15

	387,000,000.00	556,329,951.86			42,989,592.77		176,561,574.52	1,162,881,119.15
"_"	193,500,000.00	-178,858,800.00			-1,433,729.77		98,205,937.48	111,413,407.71
							117,555,937.48	117,555,937.48
							117,555,937.48	117,555,937.48
		14,641,200.00			-1,433,729.77			13,207,470.23
1								
2			0.00					14,641,200.00
					-1,433,729.77			-1,433,729.77

1

	()								
	586,566,000.00	423,748,945.79			87,746,083.75		836,540,774.95	-3,132,178.30	4,724,497.19	1,936,194,123.38
	586,566,000.00	423,748,945.79			87,746,083.75		836,540,774.95	-3,132,178.30	4,724,497.19	1,936,194,123.38
		6,259,500.00					62,797,754.28	-404,301.81	29,677,396.48	98,330,348.95
							103,857,374.28		1,035,088.53	104,892,462.81
							103,857,374.28		1,035,088.53	104,892,462.81
		6,259,500.00						-404,301.81	29,086,062.83	34,941,261.02
1										
2		6,259,500.00								6,259,500.00
3								-404,301.81	29,086,062.83	28,681,761.02
							-41,059,620.00		-443,754.88	-41,503,374.88
1										
2										
3							-41,059,620.00		-443,754.88	-41,503,374.88
4										
1										
2										
3										
4										
1					10,576,576.41					10,576,576.41
2					10,576,576.41					10,576,576.41
	586,566,000.00	430,008,445.79			87,746,083.75		899,338,529.23	-3,536,480.11	34,401,893.67	2,034,524,472.33

2012 6

	()									
	387,000,000.00	558,035,770.09			66,558,949.15		597,283,762.08	-3,552,430.65	12,343,369.01	1,617,669,419.68
	387,000,000.00	558,035,770.09			66,558,949.15		597,283,762.08	-3,552,430.65	12,343,369.01	1,617,669,419.68
	193,500,000.00	-178,858,800.00					126,615,023.58	-61,772.85	-1,060,264.77	140,134,185.96
							145,965,023.58		-794,712.56	145,170,311.02
							145,965,023.58		-794,712.56	145,170,311.02
		14,641,200.00						-61,772.85		14,579,427.15
1										
2		14,641,200.00								14,641,200.00
3								-61,772.85		-61,772.85
							-19,350,000.00		-265,552.21	-19,615,552.21
1										
2										
3							-19,350,000.00		-265,552.21	-19,615,552.21
4										
	193,500,000.00	-193,500,000.00								
1	193,500,000.00	-193,500,000.00								
2										
3										
4										
1				11,003,428.34						11,003,428.34
2				11,003,428.34						11,003,428.34
	580,500,000.00	379,176,970.09			66,558,949.15		723,898,785.66	-3,614,203.50	11,283,104.24	1,757,803,605.64

○

“ ” “ ”

1999 11

340000000022295

2002 2 7 [2002]22 2002 5

22 4,000.00

11,000 11,000.00

2004 (

“ ”

6,288.1218 57.165%

4,000 36.364% 678.8832

6.172% 32.995 ,

0.299%

2005 11 920

2005 2005

12 31 11,000 10 5

5,500 16,500

2006

2006 68

6,500

23,000

2008 5 20 2007

23,000 10 2 3
 34,500

2009
 [2009]1079
 4,200
 38,700

2011 3 30 2010
 38,700 10 5 58,050

2011 12 13 2011
 606.60 58,656.60

2012 6 30 58,656.60

2012 6 30

“ ”

“ ”

“ ”

“ ”

“ ”

“ ”

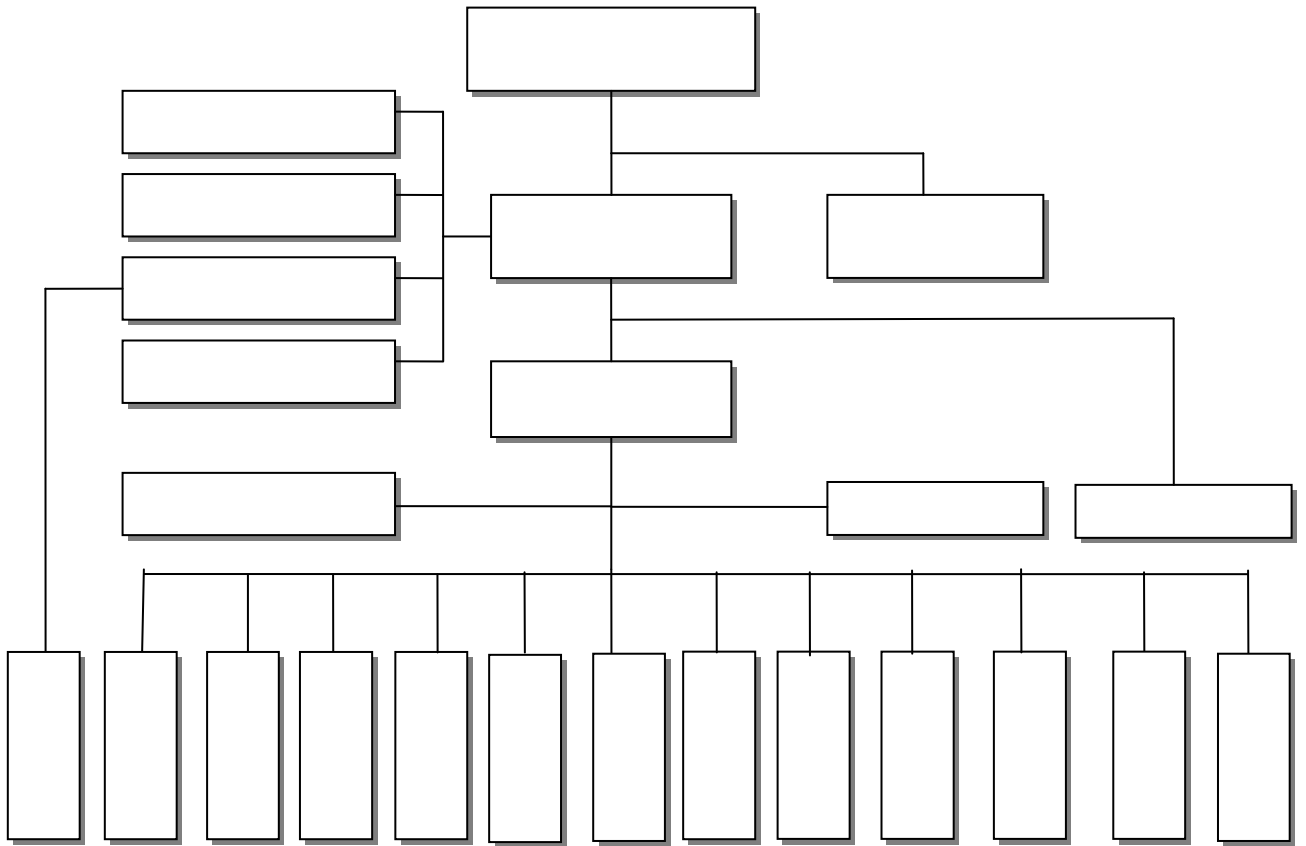
“ ”

“ ”

“ ”

“ ”

“ ”



()

15 — 38 (“ 2006 2
”) 15
— (2010)

()

()

1 1 12 31

()

()

1

2

()

()

()

1

2

“ ”

()

1

2

1

2

3

4

5

3

1

2

1

2

4

5

6

1

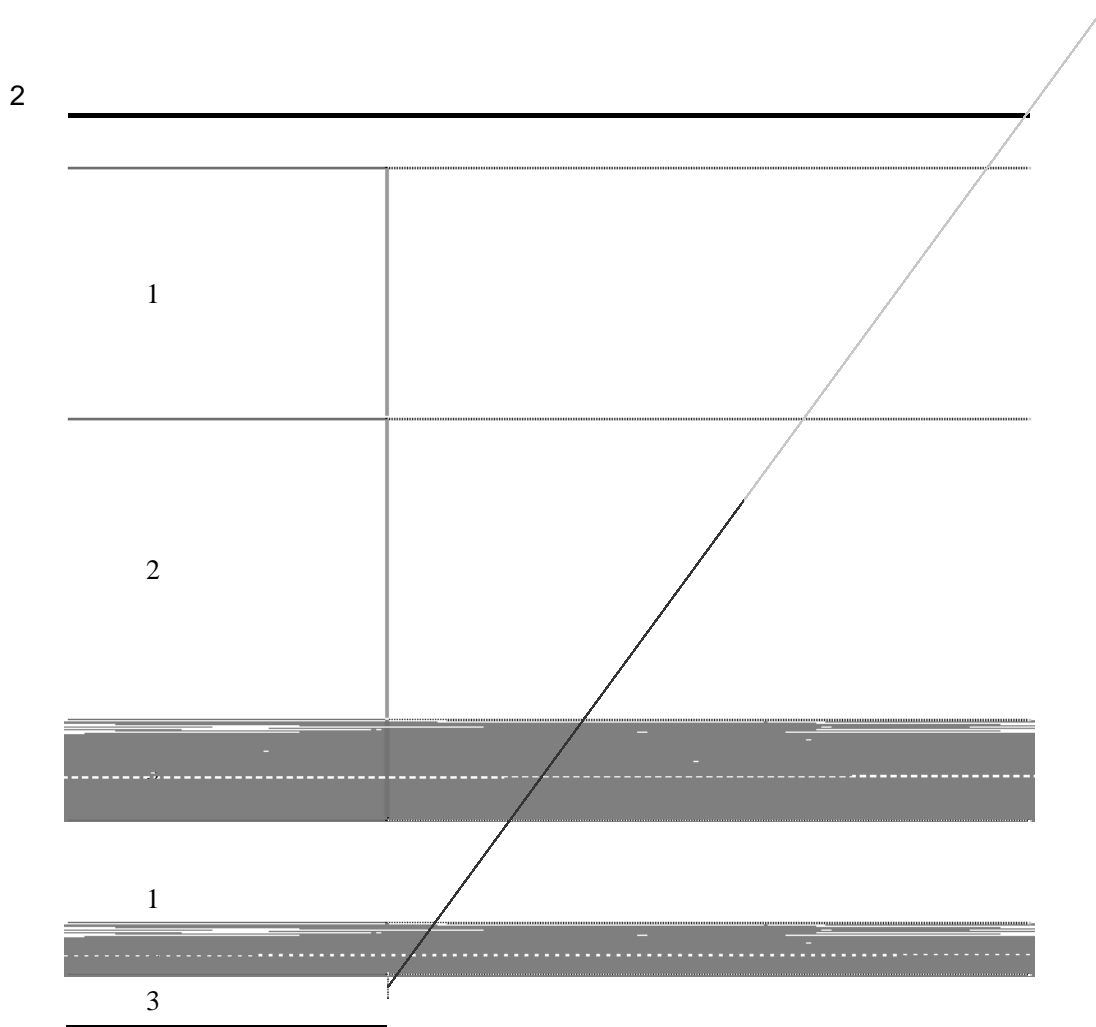
2

()

1

2,000

100



()

1

2

3

4

5

1

2

()

1

1

2

2

1

)D1•r•R ã),, ü

)ReW, 4, 9, 0, 1, N, M, %, ã, ã, ã, i, C, ã, ã, ã

3

4

()

()

1

1

2

2

		%	%
	20-30	3-10	4.85-3.00
	8-12	3-10	12.15-7.50
	3-10	3-10	32.33-9.00
	5-10	3-10	19.40-9.00

3

4

1

2

3

4

()

1

2

3

()

1

1

2

3

2

3

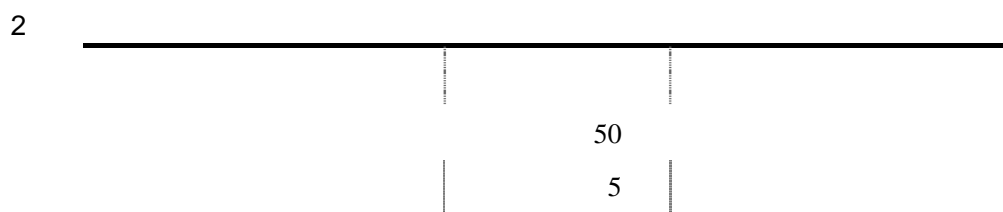
3

4

()

1

1



3

4

5

6

1

2

3

4

5

()

()

()

1

1

2

3

2

()

1

2

Black-Scholes

()
1

2

1

2

3

1

2

()
1

2

()

()

1

1

2

()

- 1
- 2
- 3
- 4
- 5
- 6
- 7
- 8
- 9
- 10

()

1

2

()

()

		%	
		17.00	1
		3.00 5.00	2
		5.00 7.00	

		12.50	15.00	25.00
		1.00	2.00	3.00

1

2011 23

17%

2

3% 5%

5%

()

5

[2008]21

12.5%

2011 1 1 2012 12 31

6

[2008]172

[2008]362

GR201044000329

2010-2012

15%

()

1

							(%)	(%)				
			900		900		99.93 1	99.93 1		47,796.11		
			550		550		99.93 1	99.93 1		9,692.07		
			9,500		9,500		99.72 2	99.72 2		1,441,364.51		
			8,000		8,000		100.00	100.00				
			50		50		100.00	100.00				
			10				99.62	99.62		-5,252.09		

2 Ä EíE› à Ô { ß Ö î Ü Jª k, X \$ @ Ì

\$ @ Ì < / Ä	\$ @ Ì 20 _	"¼ `	î u û Bû	"¼ ` C	4£9ù8x È	ó ÿ rL Î C Nq	rBü Þ X ä í \$ @ ì " iC ,X JªNM ,Ä -Nq	Ö6u!" _ (%)	>< ‡ !" _ (%)	ú Ü J y><	â D6u ð ,ž	â D6u ð ,ž *ü b † £ â D6u ð 3 ,ž, XG≠Nq	ø!; @ Ì Ý5Ü ,ž † £ \$ @ Ì â D6u ð Ú™,X ó c 3CYE› â D6u ð üA¹ \$ @ Ì ó ñ Ý5Ü ,ž •Ý ÑNq â, X -Nq
2' 1Jv4§ X	{6u \$ @ Ì	4; H	*ó {JÔ ÄÄ'Au Ä }>™	35,310 Û	*ó {JÔ EO _ Ä P- *ü î1%Jv 4§ X { • ž „ _ m' \$ m ÄJv 4§ XA'Au Ä¹¹ }>™	35,310 Û	99.62 Ä"¼1 Ä	99.62 Ä"¼1 Ä			2,204,486.30		
KS"32û î È	<C \$ @ Ì	A]	*ó {JÔ	1,500 Û	*ó {ÄJÔ G≠2 Û š È Ä „G! È	1,500 Û	100.00	100.00					
Þ#K °(M	{6u - @ Ì	Þ#K	T á u	5,000 Û	Jv4§ X ç îNZ ³,X - T á u	5,000 Û	99.62 Ä"¼2 Ä	99.62 Ä"¼2 Ä					
. ý m'	{6u - @ Ì	!:"	*ó {JÔ	2,910 Û	„_ m' \$ m Eô žJÔ	2,910 Û	99.62 Ä"¼3 Ä	99.62 Ä"¼3 Ä					
2' 1G;Jv	<C \$ @ Ì	4; H	*ó {JÔ ÄÄ'Au Ä }>™	5,300 Û	*ó {ÄJÔ î1% Jv4§ X { • ž „_ m' \$ m x Jv4§ XA'Au Ä¹ ¹ Ä]>™ x S Û Jv4§ X 1/ß `	5,300 Û	100.00	100.00					

1				4%	2012	6	30						99.62
2				100%	2012	6	30						99.62
3				100%	2012	6	30						99.62
3													
									(%)				(%)
			500		500				99.65 1	99.65 1			-21,837.77
					1				99.72 2	99.72 2			-68,701.53
			5,000		5,000				100.00	100.00			
		Cayman. Island.B.W.I	1,050		1,050				99.72 2	99.72 2			-54,113.63
		Cayman. Island.B.W.I	1,500		1,500				99.72 2	99.72 2			61,726.65
			1,100		1,100				99.72 2	99.72 2			367,567.79

				1		1		99.72 2	99.72 2		200,000.66		
--	--	--	--	---	--	---	--	------------	------------	--	------------	--	--

()

()

1 6
 1 85.50% 100%
 100% 100%
 2
 3 51%
 2

()

1

	167,190,722.24	9,726,858.44
	12,058,444.29	-858,407.18
	921,518.45	-21,672.45
	-3,203.82	-691.10
	1,055,025.22	55,025.22
	5,358,095.94	-2,031,888.45

2

()

()

1

1.1

2012 1 16

2012

100%

100%

2012	1							100%
								220,590,000.00
		37,410,000.00		2012	2	2		
		70%		154,413,000.00			2012	3 13
		30%	66,177,000.00	2012	6	30		
		85.50%		2012	3	13		
								220,590,000.00

2012

			-1.69	0
			-0.04	-0.07

1.2

2011 12 7

2011

312.50

2012 1 17

[2012]1008

312.50 2012 2 23

612.50

51%

2012 2 23

312.50

20

101,425.84

632.63	322.64	312.50	10.14	10.14

	795.77	550.85	
	185.48	146.96	
	632.63	426.50	

()

()

()

()

2012 6 30

2012

6 30

2012 6 30

2012 6 30

()

	746,380.62	1.0000	746,380.62	648,894.38	1.0000	648,894.38
	2,008.66	6.3249	12,704.57	2,408.66	6.3009	15,176.73
				24,678.89	0.7886	19,461.77
	190.72	4.9690	947.69	190.72	4.8679	928.41
			760,032.88			684,461.29
	165,142,178.70	1.0000	165,142,178.70	287,358,632.60	1.0000	287,358,632.60
	2,470,363.08	6.3249	15,624,799.44	1,661,483.49	6.3009	10,468,841.32
				1.00	0.0811	0.08
	8,208,946.94	0.7959	6,533,500.87	1,912,595.93	0.8107	1,550,541.52
	201,844.08	0.8152	164,543.29	1,104,489.75	0.7886	871,000.62
	1,761,268.58	4.9690	8,751,743.57	1,793,885.97	4.8679	8,732,457.51
			196,216,765.87			308,981,473.65
	321,000,238.46	1.0000	321,000,238.46	152,256,456.75	1.0000	152,256,456.75

			321,000,238.46			152,256,456.75
			517,977,037.21			461,922,391.69

			130,460,038.80			64,998,411.97
			2,930,298.28			34,517,707.04
			90,000,000.00			15,000,000.00
			90,411,676.99			49,908,219.83
			7,198,224.39			2,832,117.91
			321,000,238.46			167,256,456.75

()

1

			39,456,990.00			76,441,064.73
			7,195,500.00			9,500,000.00
			46,652,490.00			85,941,064.73

2

3

4

2012 6 30
269,489,707.21

15,391,000.00

	2012-1-9	2012-7-9	16,000,000.00
	2012-4-16	2012-10-16	15,000,000.00
	2012-1-19	2012-7-19	14,000,000.00
	2012-5-22	2012-11-22	10,400,000.00
	2012-6-8	2012-12-5	10,000,000.00
			65,400,000.00

5

6

5

5

()

1

		%		%		%		%
1	699,370,808.39	58.50	34,968,540.39	5.00	795,410,935.82	66.49	39,770,546.80	5.00
1 2	265,784,133.57	22.23	26,578,413.37	10.00	156,677,180.85	13.10	15,765,981.89	10.06
2 3	74,168,960.39	6.20	22,250,688.11	30.00	86,690,702.26	7.25	28,035,702.16	32.34
3 4	63,572,042.77	5.32	31,786,021.39	50.00	47,948,004.51	4.01	26,118,605.53	54.47
4 5	17,847,959.11	1.49	14,278,367.29	80.00	69,453,474.31	5.80	55,978,785.80	80.60
5	74,793,343.23	6.26	74,793,343.23	100.00	40,076,358.17	3.35	40,076,358.17	100.00
	1,195,537,247.46	100.00	204,655,373.78	17.12	1,196,256,655.92	100.00	205,745,980.35	17.20

2

		%			%	
1	699,370,808.39	58.50	34,968,540.39	795,410,935.82	66.49	39,770,546.81
1 2	265,784,133.57	22.23	26,578,413.36	156,567,998.85	13.09	15,656,799.89
2 3	74,168,960.39	6.20	22,250,688.12	83,792,857.30	7.01	25,137,857.20
3 4	63,572,042.77	5.32	31,786,021.39	43,658,798.00	3.65	21,829,399.01
4 5	17,847,959.11	1.49	14,278,367.29	67,373,442.56	5.63	53,898,754.05
5	62,117,078.01	5.20	62,117,078.01	36,776,358.17	3.07	36,776,358.17
	1,182,860,982.24	98.94	191,979,108.56	1,183,580,390.70	98.94	193,069,715.13

12,676,265.22

			%)
	3,722,150.00	3,722,150.00	100
	3,308,782.00	3,308,782.00	100
	2,100,271.75	2,100,271.75	100
	2,010,000.00	2,010,000.00	100
	830,448.00	830,448.00	100
	291,523.00	291,523.00	100
	269,571.50	269,571.50	100
	143,518.97	143,518.97	100
	12,676,265.22	12,676,265.22	

3

	4-5	13,584,278.94	10,867,423.15
	4-5	8,000,000.00	6,400,000.00

F¼				
Ü Au		21,584,278.94	17,267,423.15	
4 Ä ó rL JÔ,X h Bú! 5,043,165.04 È JÔ h Bú! BúUXEWKS,X 1/ß! È				
+ b v . { Ä"%JÔ1 s ' È @ ÌNXAu "© ²E"> h Bú! JÔ Ä				
	h Bú!			ú ' G6(
)! á/Ä	ûBü	JÔG¶Nq	JÔ s '	x ç {*ó
Ä 7 & / 9Ä0NAx < Eô ÝL\$ @ ì	1/ß!	395,500.00	#A, 7 £	ú
Ä, [Š î1%2î4³ Þ#K ÝL\$ @ ì	1/ß!	63,189.05	@ ì"%JÔ	ú
Ä J '5b "Jv4§ X ÝL\$ @ ì	1/ß!	364,000.00	@ ì Æ"%JÔ	ú
Ä G ð îA' ÝL\$ @ ì Þ#K Ú @ ì	1/ß!	77,500.00	#A,KÁ Ü	ú
Ä ë € Ý B"QE: ÝL\$ @ ì	1/ß!	97,500.00	#A,KÁ Ü	ú
Ä J ' c û"QE: î % m ÝL\$ @ ì	1/ß!	173,500.00	ÆE>A•A• È	ú
Ä E"†"•+ EiE' r î @ ì	1/ß!	47,160.00	@ ì Æ"%JÔ	ú
Ä % "†Tâ ý/¶ T r î ÝL\$ @ ì	1/ß!	145,152.00	@ ì Æ"%JÔ	ú
Ä Á + 8£ ²¶ T ÝL\$ @ ì	1/ß!	15,000.00	@ ì Æ"%JÔ	ú
Ä Ñ Ñ îA'1 x 1/ß xLÉ ANM				
,Ä4£)ÜF¼	1/ß!	209,262.99	@ ì Æ"%JÔ	ú
Ä K "3!"5B î ¶) ÝL\$ @ ì	1/ß!	527,000.00	@ ì Æ"%JÔ	ú
Ä ë € Ý D ÑL Jv4§ X ÝL\$ @ ì	\$ m!	2,928,401.00	@ ì Æ. {	ú
Ü Au		5,043,165.04		

5 Ä ó ÿ h Bú! ' h Ö @ ì 5 Á 1 Þ Ä ÿ 5 Á Ä < † 6u Ñ,X6u ð) !! NM Ä

6 Ä h Bú! ô! G¶Nq! h á)!™ %o

4 h Bú!					
) ! á/Ä		â @ ì G	BúM6 -Nq	BúUX	Nq,XI" _ (%)
1 Ô á	v		32,502,732.13	1-2 H	2.72
1 ` á 4 < € Ð Œ" ^ WÀ 1Ð İ0 r37 } AD€					

()

1					
		(%)		(%)	
1	177,161,931.07	92.22	71,713,412.87	93.13	
1 2	9,359,721.99	4.87	2,311,732.92	3.00	
2 3	2,664,135.76	1.39	1,339,835.31	1.74	
3	2,916,403.58	1.52	1,638,617.76	2.13	
	192,102,192.40	100.00	77,003,598.86	100.00	

2

	40,000,000.00	1
	21,791,250.38	1
	5,200,000.00	1
	3,590,396.83	1
	6,339,191.92	1
	76,920,839.13	

3

5

5

4

5

	67,667.59	4.9690	336,240.25	51,614.00	4.8679	251,251.79
	839,716.98	0.7959	668,330.74	20,640.00	0.7886	16,276.70
			1,004,570.99			267,528.49

()

1

		%		%		%		%
1	158,254,934.90	56.65	7,912,746.72	5.00	112,520,096.76	57.33	5,626,442.99	5.00

1	2								10.00
2	3	23,172,726.28	8.29	6,951,817.89	30.00	21,443,771.67	10.93	6,433,131.50	30.00
3	4	9,742,894.88	3.49	4,871,447.46	50.00	11,974,585.87	6.10	5,987,292.95	50.00
4	5	6,927,463.02	2.48	5,541,970.40	80.00	4,878,871.56	2.49	3,903,097.24	80.0050.00

4	5	6,927,463.02	2.48	5,541,970.40	4,878,871.56	2.49	3,903,097.24
5		8,919,392.09	3.20	8,919,392.09	6,798,230.75	3.46	6,798,230.75
		278,518,736.84	99.70	41,347,507.14	195,413,401.93	99.57	32,527,979.97

846,923.52

				(%)
		412,655.44	412,655.44	100
		308,750.00	308,750.00	100
		48,750.00	48,750.00	100
		76,768.08	76,768.08	100
		846,923.52	846,923.52	

3

4

977,361.19

			100,000.00	
			40,000.00	
			837,361.19	
			977,361.19	

5

5

5

6

				(%)
		20,614,750.00	1-2	7.38
		7,990,000.00	1	2.86
		5,445,116.60	1-2	1.95
		5,235,587.70	1-2	1.87
		4,813,248.90	1	1.72
		44,098,703.20		15.78

7

8

9

()

3

2012

2012

2

	(%)	(%)					
	49.00	49.00	65,929,900.48	40,657,076.67	25,272,823.81	56,279,408.00	729,890.09

3

						(%)	(%)				
	9,800,000.00	12,037,378.59	357,646.14		12,395,024.73	49.00	49.00				
	9,800,000.00	12,037,378.59	357,646.14		12,395,024.73	49.00	49.00				
	8,300,000.00	8,300,000.00	-8,300,000.00								
	8,300,000.00	8,300,000.00	-8,300,000.00								
	18,100,000.00	20,337,378.59	-7,942,353.86		12,395,024.73						

4 ÄKS ó6u iC £ á™ %oAÈ á

´ è € Ý D ÑL Jv4§ X ÝL\$ @ ì Ž+ AÈ È 2012 H 5 Ü 29 ´ è € Ö1 ` 4{
 Žlâ"©L6 Æ «)Ú è € Ý D ÑL Jv4§ X ÝL\$ @ ì. {#Ü1k Ô È è € Ö1 ` 4{ Žlâ
 "©L6 Ä ` !â. +1 09093-5 È ÄEí-1 ŽE-> + y ÈE- 9. {#Ü1k/ß c Ä
 @ ì ó.BAx iC 3 Ä

(?) iC û {

NM,Ä	H ñ -Nq	ó r t	ó £ á	ó ý -Nq
1 ÊBúM6 s ÜAu	33,908,167.08	8,379,050.99		42,287,218.07
Ä Î1% (=	33,908,167.08	8,379,050.99		42,287,218.07
2 Ê3 Au l » `3 Au JÔ ÜAu	5,932,938.19	1,035,297.23		6,968,235.42
Ä Î1% (=	5,932,938.19	1,035,297.23		6,968,235.42
3 Ê iC û { " ÜAu	27,975,228.89	7,343,753.76		35,318,982.65
Ä Î1% (=	27,975,228.89	7,343,753.76		35,318,982.65
4 Ê iC û { £ š Ú3 AuG¥Nq ÜAu				
Ä Î1% (=				
5 Ê iC û {BúM6 È ÜAu	27,975,228.89	7,343,753.76		35,318,982.65
Ä Î1% (=	27,975,228.89	7,343,753.76		35,318,982.65
ó l »Nq	1,035,297.23	Ä		

(1) ÎnC {

1 ÄÎnC {™ %o

NM,Ä	H ñ -Nq	ó r t	ó £ á	ó ý -Nq
Ô ÄBúM6 s ÜAu Ö	1,081,720,236.19	207,393,692.86	4,342,573.96	1,284,771,355.09
J Ö ž Î1% (=	590,690,143.97	151,280,256.90		741,970,400.87
<A' Ü	427,067,466.99	42,954,936.29	1,565,143.33	468,457,259.95
E=Eg 1 K	25,322,058.80	6,729,270.21	2,103,497.02	29,947,831.99
r @A' Ü ž J ^a	38,640,566.43	6,429,229.46	673,933.61	44,395,862.28
		ó „ r	ó Au ¢	
` Ä3 Au l » ÜAu Ö	397,774,990.64	15,945,180.44	37,333,268.22	3,157,785.98
J Ö ž Î1% (=	139,441,514.67	3,175,848.20	15,045,669.87	157,663,032.74
<A' Ü	225,610,578.66	9,757,389.82	16,825,749.98	688,880.80
E=Eg 1 K	11,727,791.10	1,091,082.19	2,552,511.39	13,891,866.32
r @A' Ü ž J ^a	20,995,106.21	1,920,860.23	2,909,336.98	989,386.82
				24,835,916.60

	683,945,245.55	154,115,244.20	1,184,787.98	836,875,701.77
	451,248,629.30	133,058,738.83		584,307,368.13
	201,456,888.33	16,371,796.49	876,262.53	216,952,422.29
	13,594,267.70	3,085,676.63	623,978.66	16,055,965.67
	17,645,460.22	1,599,032.25	-315,453.21	19,559,945.68
	683,945,245.55	154,115,244.20	1,184,787.98	836,875,701.77
	451,248,629.30	133,058,738.83	0.00	584,307,368.13
	201,456,888.33	16,371,796.49	876,262.53	216,952,422.29
	13,594,267.70	3,085,676.63	623,978.66	16,055,965.67
	17,645,460.22	1,599,032.25	-315,453.21	19,559,945.68

37,333,268.22

124,061,920.14

71,219,445.27

15,945,180.44

2

3

4

5

6

	7,270,003.59		2012
	3,983,405.17	,	2012
	12,061,952.33	,	2012
	8,762,707.37	,	2012

	27,114,148.13	,	2012
	72,449,071.66	,	2012
	131,641,288.25		

7

	266,336,183.61	67,532,018.83	198,804,164.78
	266,336,183.61	67,532,018.83	198,804,164.78

()

	17,688,961.17	17,688,961.17	6,480,872.60	6,480,872.60
	12,825,936.19	12,825,936.19	12,743,258.02	12,743,258.02
	9,349,757.42	9,349,757.42	4,870,158.61	4,870,158.61
	9,301,933.14	9,301,933.14		
	8,292,560.83	8,292,560.83	506,611.57	506,611.57
	2,617,750.00	2,617,750.00	1,418,117.04	1,418,117.04
	2,357,590.53	2,357,590.53	63,856,258.03	63,856,258.03
	1,322,799.68	1,322,799.68	9,404,137.42	9,404,137.42
	1,130,129.56	1,130,129.56		
	277,922.20	277,922.20	177,922.20	177,922.20
	276,705.23	276,705.23	276,705.23	276,705.23
ERP	200,000.00	200,000.00	200,000.00	200,000.00
	199,807.10	199,807.10		
	119,658.12	119,658.12	119,658.12	119,658.12
	50,000.00	50,000.00	50,000.00	50,000.00
10KV	39,004.00	39,004.00		
	6,289.17	6,289.17		
			12,342,620.72	12,342,620.72
			854,281.16	854,281.16
			128,262.50	128,262.50
			118,792.10	118,792.10
	66,056,804.34	66,056,804.34	113,547,655.32	113,547,655.32

2

					(%)				(%)	
	63,856,258.03	1,776,765.68	63,275,433.18			1				2,357,590.53
	12,342,620.72	34,892,275.88	47,234,896.60			2				0.00
	12,743,258.02					3				12,743,258.02
	6,480,872.60	11,208,088.57				4				17,688,961.17
	95,423,009.37	47,877,130.13	110,510,329.78							32,789,809.72

- 1
- 2
- 3
- 4

124,061,920.14

()

1

1	226,976,943.14	33,311,611.40	260,288,554.54
(1).	214,261,774.06	32,766,647.31	247,028,421.37
(2). /	12,715,169.08	544,964.09	13,260,133.17
2	21,148,269.03	5,102,493.71	26,250,762.74
(1).	19,886,550.73	3,682,566.00	23,569,116.73
(2). /	1,261,718.30	1,419,927.71	2,681,646.01
3	205,828,674.11	28,209,117.69	234,037,791.80
(1).	194,375,223.33	29,084,081.31	223,459,304.64
(2). /	11,453,450.78	-874,963.62	10,578,487.16
4			
(1).			
(2).			
5	205,828,674.11	28,209,117.69	234,037,791.80
(1).	194,375,223.33	29,084,081.31	223,459,304.64
(2). /	11,453,450.78	-874,963.62	10,578,487.16

1 3,841,497.74

2 33,013,894.60 1,260,995.97

3 101,913,845.58

()

1

	2,923,049.70		2,923,049.70
	845,736.86		845,736.86
	335,575,703.23		335,575,703.23
		67,361,242.88	67,361,242.88

2012

	339,344,489.79	67,361,242.88		406,705,732.67
--	----------------	---------------	--	----------------

1

2012 1 100%

220,590,000.00

37,410,000.00

2012 2 2

70%

154,413,000.00

2012 3 13

30%

66,177,000.00

2012 3 13

220,590,000.00

220,590,000.00

2012

2 28

67,361,242.88

2

1

2

3

()

	350,144.20	80,000.00	182,633.32		247,510.88
		544,273.87	76,531.94		467,741.93
	350,144.20	624,273.87	259,165.26		715,252.81

()

1

	157,641.41	282,465.69
	330,538.60	268,659.34
	38,279,525.13	37,368,773.08
		2,212,991.57
	38,767,705.14	40,132,889.68

2

	246,849,804.44
	5,549,224.71
	1,050,942.76
	1,322,154.39
	254,772,126.30

()

	239,120,883.84	16,002,656.61	15,014,213.37	17,267,423.15	6,020,526.23	246,849,804.44
	5,530,957.02		18,267.69			5,549,224.71
	244,651,840.86	16,002,656.61	15,032,481.06	17,267,423.15	6,020,526.23	252,399,029.15

:

()

1

	365,000,000.00	328,000,000.00
	317,750,000.00	305,000,000.00

	13,453,717.30	26,971,629.89
		115,000,000.00
	622,133,542.77	413,171,629.89

2 622,133,542.77

3 5 5

()

1

1	1,273,937,702.98	1,316,934,565.80
1-2	97,677,068.18	97,241,579.77
2-3	30,737,725.18	76,460,667.38
3	38,202,488.69	58,525,300.96
	1,440,554,985.03	1,549,162,113.91

2 5 5

3 “ ”

4

73,763,965.35

()

1

1	495,961,146.90	472,682,446.81
1-2	72,242,004.41	286,043.24

2-3		4,909,481.97	122,779.90
3		1,679,164.04	11,404.04
		<u>574,791,797.32</u>	<u>473,102,673.99</u>
2	5	5	
3	"	"	
4			
()			

1	30,711,759.56	157,610,451.90	165,942,363.31	22,379,848.15
2		7,816,570.01	7,792,890.63	23,679.38
3	3,229,132.24	24,675,488.46	24,450,155.52	3,454,465.18
	2,217,041.88	15,397,927.30	15,280,092.60	2,334,876.58
	695,721.92	6,034,623.89	5,957,698.35	772,647.46
	143,581.65	1,157,539.00	1,173,712.08	127,408.57
	52,256.31	473,470.77	457,840.82	67,886.26
	120,530.48	1,611,927.50	1,580,811.67	151,646.31
4	293,584.45	1,995,505.54	2,025,399.70	263,690.29
5	11,734,572.18	3,881,884.35	3,357,506.28	12,258,950.25
6				
	<u>45,969,048.43</u>	<u>195,979,900.26</u>	<u>203,568,315.44</u>	<u>38,380,633.25</u>

()			
		-6,372,203.12	12,753,857.46
		77,871,537.93	62,635,477.57
		2,974,600.27	1,788,279.39
		30,644,774.61	33,660,440.33
			371,273.76
		2,441,920.30	1,353,096.66
		703,398.02	801,173.68
		1,520,859.38	1,579,383.24
		8,501.47	645,136.15
		3,110,249.11	3,844,367.64
		1,188,558.58	2,667,373.61
		3,168,586.12	64,312.21
		<u>117,260,782.67</u>	<u>122,164,171.70</u>

“ ”

()

	2,113,372.27	2,963,989.16
	12,210,483.87	
	14,323,856.14	2,963,989.16

()

	709,307.09	265,552.21
	709,307.09	265,552.21

()

1

1	81,368,641.37	45,514,873.39
1-2	14,284,458.05	4,426,829.56
2-3	3,190,129.34	6,025,964.65
3	12,676,758.85	8,891,209.50
	111,519,987.61	64,858,877.10

2

5 5

	20,133,346.29	133,346.29
	20,133,346.29	133,346.29

3 “ ”

4

	1,687,377.80	
	1,000,000.00	
	1,000,000.00	

600,000.00
600,000.00
6,057,377.80

5

20,000,000.00
5,000,000.00
3,483,000.00
1,704,975.00
1,687,377.80
31,875,352.80

()

1

81,212,140.00	80,651,520.00
81,212,140.00	80,651,520.00

2

1

81,212,140.00	80,651,520.00
81,212,140.00	80,651,520.00

2

		6.1950		6.1950		6.1950	
		6.1950		6.1950		6.1950	
		6.1950		6.1950		6.1950	
2011/6/15	2012/6/14	6.1950			6,400,000.00		40,325,760.00
2011/6/15	2012/12/14	6.1950	6,400,000.00	40,606,070.00	6,400,000.00		40,325,760.00
2011/6/15	2013/06/14	6.1950	6,400,000.00	40,606,070.00			
			12,800,000.00	81,212,140.00	12,800,000.00		80,651,520.00

()

1

	5,652,573.36	5,911,048.35
	162,929,000.00	202,888,980.00
	1,636,362.00	1,963,635.00
	170,217,935.36	210,763,663.35

2

		6.1950		6.1950		6.1950	
		6.1950		6.1950		6.1950	
		6.1950		6.1950		6.1950	
2011.6.15	2015.6.4	6.1950	19,400,000.00	122,322,930.00	19,400,000.00		122,237,460.00
2011.6.15	2013.12.4	6.1950	6,400,000.00	40,606,070.00	12,800,000.00		80,651,520.00
2010.6.2	2020.6.1	5.9400		5,652,573.36			5,911,048.35
2001.7.31	2015.8.6	2.5500		1,636,362.00			1,963,635.00
			25,800,000.00	170,217,935.36	32,200,000.00		210,763,663.35

()			
		10,576,576.41	10,576,576.41
		10,576,576.41	10,576,576.41

()			
1.	421,593,525.82	6,259,500.00	427,853,025.82
2.	2,155,419.97		2,155,419.97
	423,748,945.79	6,259,500.00	430,008,445.79

2010

2011 7

8

2011

6,259,500.00

6,259,500.00

()			
		87,746,083.75	87,746,083.75
		87,746,083.75	87,746,083.75

()

		899,338,529.23	
2012	4	18	10
0.70		41,059,620.00	
()		
1			
		2,527,461,659.99	2,567,374,766.40
		21,505,809.80	26,266,680.57
		2,118,496,113.95	2,215,864,310.56

5

		(%)
	120,753,964.46	4.74
	118,742,411.72	4.66
	73,259,084.23	2.87
	68,740,517.81	2.70
	64,870,062.34	2.54
	446,366,040.56	17.51

()

	29,472,497.10	25,550,605.43
	3,566,436.40	2,015,588.66
	3,448,553.55	1,510,202.52
	598,316.12	1,116,136.15
	261,268.06	576,312.90
	37,347,071.23	30,768,845.66

()

	16,972,863.36	14,512,172.61
	6,580,456.88	3,454,039.83
	4,681,657.01	4,619,994.38
	5,827,647.68	3,512,684.05
	1,081,634.05	1,288,521.21
	1,041,532.09	429,491.65
	1,276,694.92	685,400.00
	5,321,357.88	3,385,601.28
	42,783,843.87	31,887,905.01

()

	80,699,881.66	53,587,466.73
	11,061,153.51	7,617,010.76
	4,779,224.84	3,386,310.34
	5,731,358.82	3,541,582.13
	4,585,165.06	1,659,755.12
	6,259,500.00	14,641,200.00
	36,795,980.46	27,713,855.07
	149,912,264.35	112,147,180.15

()

	52,208,901.29	22,711,822.19
	4,280,646.23	4,729,471.44
	3,168,605.82	-1,163,968.59
	5,206,653.22	7,806,478.55
	56,303,514.10	24,624,860.71

()

	357,646.14	-773,377.83
	-8,300,000.00	2,691,297.27
	-7,942,353.86	1,917,919.44

()

	-2,253,209.78	7,677,821.77
	18,267.69	-760,712.45
	-2,234,942.09	6,917,109.32

()

1

1	193,053.31	136,353.32	193,053.31
	193,053.31	136,353.32	193,053.31
2	2,048,963.29	491,543.94	2,048,963.29
3			
4	93,796.00		93,796.00
5	69,936.60	73,334.30	69,936.60
6	178,672.61	359,180.32	178,672.61
7	329,886.31	426,717.29	329,886.31
	2,914,308.12	1,487,129.17	2,914,308.12

2

1		
2		
(1)		84,000.00
(2)		100,000.00
(3)	400,000.00	30,000.00
(4)	126,000.00	
(5)	950,000.00	
(6)	318,002.29	
(7)	254,961.00	277,543.94
	2,048,963.29	491,543.94
	2,048,963.29	491,543.94

()

1	457,908.79	424,841.20	457,908.79
	457,908.79	424,841.20	457,908.79
2	1,150,000.00	340,000.00	1,150,000.00
3	234,822.37	120,792.38	234,822.37
	1,842,731.16	885,633.58	1,842,731.16

()

	33,573,253.73	30,059,723.61
	1,023,110.94	-1,279,384.04
	34,596,364.67	28,780,339.57

()

1

$$=P0 \div S$$

$$S = S0 \quad S1 \quad Si \times Mi \div M0 - Sj \times Mj \div M0 - Sk$$

P0

S

S0

S1

Si

Sj

Sk

M0

Ü Ñ D xMi r t6u Ñ ò ÜCK7Ç y ó ó ý,X3 Au Ü D x Mj £ á6u Ñ ò ÜCK7Ç y ó ó ý,X3 Au Ü D Ä

2 Ä/ÖGž!£6u ,ž

/ÖGž!£6u ,ž =P1/(S0ÇS1 ÇSi×Mi÷M0–Sj×Mj÷M0–Sk+Ax6u A• Å6u Ñ ó Ä ÄE@ 6 1 r t,X BEİ6u t G D)

J È P1 & 2 b @ Ì BEİ6u6u ð,X " ý#z ê 7L8M24£ û 3,ž â & 2 b @ Ì BEİ 6u6u ð,X " ý#z È J5x<%/ÖGž û%0 ü BEİ6u Í J E j È Ý É Ő îAu š í È ž Ý G ?~ nE~> Ax H Ä @ Ì üAu1k/ÖGž!£6u ,ž È È h5x<% Ý/ÖGž û%0 ü BEİ6u Í & 2 b @ Ì BEİ6u6u ð,X " ý#z ê 7L8M24£ û 3,ž â & 2 b @ Ì BEİ6u6u ð,X " ý#z ` t G 6u D,X E j È Ý'; J/ÖGž/ß z ç û ã,XNN cAu 9/ÖGž!£6u ,ž È,È7Ç /ÖGž!£6u ,žE' Ő ã Ä

Ä1 Ä î !£6u ,ž

î !£6u ,ž 1 & 2 b @ Ì BEİ6u6u ð,X Ü J " ý#zL8 1 @ Ì ¥> ü è BEİ6u

,X t G DAu1k

NM,Ä	óG¥Nq	P óG¥Nq
& 2 b @ Ì BEİ6u6u ð,X Ü J " ý#z	103,857,374.28	145,965,023.58
@ Ì ¥> ü è BEİ6u,X t G D	586,566,000.00	580,500,000.00
î !£6u ,ž Ä /6u Ä	0.18	0.25

BEİ6u,X t G DAu1kE>/ß V ß Ö

NM,Ä	óG¥Nq	P óG¥Nq
H ñ Æ ¥> BEİ6u6u D	586,566,000.00	387,000,000.00
t Ö ó ¥>,X BEİ6u t D		193,500,000.00
£ Ö ó ²C,X BEİ6u t D		
ó ý ¥> ü è,X BEİ6u t D	586,566,000.00	580,500,000.00

Ä2 Ä/ÖGž!£6u ,ž

/ÖGž!£6u ,ž 1Ax H â,X & 2 b @ Ì BEİ6u6u ð,X Ü J " ý#zL8 1Ax H â,X @

ì ¥> ü è BEİ6u,X t G DAu1k

NM,Ä	óG¥Nq	P óG¥Nq
& 2 b @ Ì BEİ6u6u ð,X Ü J " ý#z Ä/ÖGž Ä	103,857,374.28	145,965,023.58
@ Ì ¥> ü è BEİ6u,X t G D Ä/ÖGž Ä	587,436,771.43	588,263,178.60
/ÖGž!£6u ,ž Ä /6u Ä	0.18	0.25

	586,566,000.00	580,500,000.00
	870,771.43	7,763,178.60
	587,436,771.43	588,263,178.60

()

1.		
2.		
3.		

()
1

		16,176,680.34
		20,000,000.00
		4,280,646.23
		2,048,963.29
		765,071.95
		43,271,361.81

2

		88,128,322.56
		6,580,456.88
		10,413,015.83
		10,606,872.52
		5,587,551.88
		5,666,799.11
		3,331,565.05
		5,206,653.22
		968,776.52
		23,615,164.05
		160,105,177.62

3

		10,375,000.00
		10,375,000.00

()

1

1			
	104,892,462.81		145,170,311.02
	-2,234,942.09		6,917,109.32
	38,368,565.45		27,249,166.75
	3,841,497.74		1,714,076.28
	259,165.26		327,145.70

“ ”	264,855.48	288,487.88
“ ”		
“ ”		
“ ”	52,208,901.29	22,711,822.19
“ ”	7,942,353.86	-1,917,919.44
“ ”	3,755,051.96	88,107.38
“ ”		
“ ”	-196,696,855.71	119,134,903.00
“ ”	-106,656,615.99	-103,960,214.95
“ ”	-175,935,253.38	-67,008,622.72
	6,259,500.00	14,641,200.00
	-263,731,313.32	165,355,572.41
2		
3		
	347,975,360.22	575,325,815.40
	375,437,391.83	374,083,237.97
	-27,462,031.61	201,242,577.43

2

		495,433,628.55
1		
4		

3

	347,975,360.22	375,437,391.83
	760,032.88	684,461.29
	196,216,765.87	308,981,473.65
	150,998,561.47	65,771,456.89
	347,975,360.22	375,437,391.83

517,977,037.21

170,001,676.99

()

							(%)	(%)		
						32,000	33.40	33.40		74702069-1

:

()

								(%)	
							(%)		
						900	99.93	99.93	76391743-1
						550	99.93	99.93	76253883-5
						8,000	100.00	100.00	79779326-2
						50	100.00	100.00	
						5,300	100.00	100.00	55752383-7
						35,310	99.62	99.62	71252825-X

						1,500	100.00	100.00	76477663-4
						5,000	99.62	99.62	73540949-9
						500	99.65	99.65	78199019-X
						2,910	99.62	99.62	68880988-6
						5,000	100.00	100.00	75341661-7
			Cayman. Island.B.W.I			1,050	99.72	99.72	
			Cayman. Island.B.W.I			1,500	99.72	99.72	
						1,100	99.72	99.72	60728866-1
						1	99.72	99.72	
						1	99.72	99.72	
						10	99.62	99.62	
						9,500	99.72	99.72	
						3,990	99.72	99.72	
						800	99.62	99.62	57346709-7
						400	99.62	99.62	58620397-1
						100	99.72	99.72	58610750-9
						2	99.72	99.72	

						1,692.80	99.93	99.93	77578947-3
						228	99.88	99.88	76520846-0
						500	99.72	99.72	77021295-8
						2,500	99.93	99.93	69726995-7
						612.5	51.00	51.00	71804138-9
						8,500	85.50	85.50	779966262-2
						2,513	85.50	85.50	75590834-0
						100	85.50	85.50	57600335-1
						1	85.50	85.50	
						100	85.50	85.50	59572313-5

()

						(%)		(%)	
					2,000.00	49.00	49.00		76628136-0

()

		76479600-2
		77736336-1
		73383573-4
		76132629-1
		79014449-7
		66075172-3
		74213917-5
		60966193-3
()		56747577-9
		76253376-X
		77075868-5
		71327080-1
		72362956-6
		73840053-7
		69829300-0
		60966291-X
		74702069-1
		67758731-7
		73910986-4
		69899130-0
		77314155-0
		79764111-1

()

1

2

/

()

					(%)		(%)
()				2.24	0.00		
				22.28	0.01	24.25	0.01
				363.23	0.18	58.43	0.03
				43.53	0.02	22.88	0.01
				1,073.80	0.53		
				33.32	0.02		
						1,276.52	0.66
						1.00	
				2,075.41	1.03	1,656.95	0.85

1

454.42

2

2.24

3

22.28

4

5.43

20.49

260.89

76.42

5

	16.38	65.62		
6			43.53	
7			1,073.8	
8			0.59	
9			33.32	
3	/			

				(%)		(%)
			34.59	0.01		
			47.56	0.02	1.19	
			85.95	0.03		
			71.28	0.03	2.42	
			0.51			
					13.00	0.01
					864.00	0.33
					386.64	0.15
					86.43	0.03
			239.89	0.09	1,353.68	0.52

4 Ä G6(/³C TM %o
@ ì Î³ TM %o Ö

Ä)! Ö Ä

Î³ • á	S³ • á/Ä	³C C {/i	³C	³C	³C	ó.BAx,X
/Ä		2O	CK Ÿ 1	4œ!6 1	,ž n È	³C ,ž
Þ#K °(M	Þ#K4Ó1% # Y2İ4³ /Æ T ÝL\$ @ ì	Î1%(=	2012.01.01	2012.12.31	q B	Ü à

G6(/³C TM %oAÈ â Ö Þ#K °(M Ú ! b Þ#K Ö d" + ²CÄ 159 È9†8... û z14Ä15Ä
 16 Ý L8 •7¼*ü ¹ ê,X { È Î³4- G6(• È EAu 2,545.55G •2G È Ý Ü à?~ n
 a/³G¥ Ä

5 Ä G6(TM ± TM %o

Ä)! Ö Ä

TM ± •	>• TM ± •	TM ±G¥Nq	TM ±CK Ÿ 1	TM ± ó 1	TM ± ú /Æ4£
2' 1 {6uLš ¶	2' 1Jv4§ X	40,000,000.00	2012/5/17	2013/3/8	ú
2' 1 {6uLš ¶	2' 1Jv4§ X	42,999,561.03	2011/06/03	2014/11/18	ú
2' 1 {6uLš ¶	2' 1Jv4§ X	38,600,000.00	2011/6/15	2015/6/14	ú
2' 1 {6uLš ¶	@ ì	700,000,000.00	2012/3/22	2015/3/21	ú
2' 1 {6uLš ¶	@ ì	50,000,000.00	2011/8/26	2012/8/25	ú
2' 1 {6uLš ¶	@ ì	55,000,000.00	2012/2/29	2012/08/29	ú
2' 1 {6uLš ¶	@ ì	6,164,900.00	2012/3/13	2013/4/25	ú
2' 1 {6uLš ¶	@ ì	60,000,000.00	2012/03/20	2012/9/20	ú
2' 1 {6uLš ¶	@ ì	60,000,000.00	2012/01/10	2012/7/10	ú
2' 1 {6uLš ¶	@ ì	10,000,000.00	2012/06/04	2012/12/04	ú
2' 1 {6uLš ¶	@ ì	20,000,000.00	2012/03/16	2012/9/16	ú
2' 1 {6uLš ¶	@ ì	50,000,000.00	2012/05/22	2012/11/22	ú
2' 1 {6uLš ¶	@ ì	25,000,000.00	2012/05/15	2012/11/15	ú
2' sLš ¶	@ ì	2,163,881.70	2011/9/28	2013/6/27	ú
2' 1 {6uLš ¶	@ ì	2,280,000.00	2012/03/19	2012/9/05	ú
2' 1 {6uLš ¶	@ ì	12,954,910.00	2012/05/29	2012/8/29	ú
2' 1 {6uLš ¶	@ ì	1,322,493.00	2012/06/05	2012/10/01	ú
2' 1 {6uLš ¶	@ ì	500,000.00	2012/06/18	2012/12/30	ú
2' 1 {6uLš ¶	@ ì	706,000.00	2012/04/13	2012/08/01	ú
2' 1 {6uLš ¶	@ ì	2,000,100.00	2012/04/13	2012/08/01	ú
2' 1 {6uLš ¶	@ ì	10,000,000.00	2011/11/17	2013/11/17	ú
2' 1 {6uLš ¶	#-"3 &E°	30,000,000.00	2012/05/04	2012/11/02	ú
2' 1 {6uLš ¶	S ðG¥ î	50,000,000.00	2011/8/10	2012/8/9	ú
2' 1 ê4~	S ðG¥ î	20,500,000.00	2012/03/01	2012/9/01	ú
2' 1 ê4~	S ðG¥ î	28,900,000.00	2012/03/06	2012/9/06	ú

"¼ Ö @ ì ÞEÄ>• TM ± _NM Æ ,88,639,100.08 ±A•G¥, J Ô KJÊ> S %" /< , 9
 72,520,000.00 ±A•G¥ È Ô K ± Ñ , 9 16,119,100.08 ±A•G¥ Ä

2012 9 20			
9 2012 6 30			60,000,000.00
10	2012 1 10		2012 7
10 2012 6 30			10,000,000.00
4	2012 6 4		2012 12
11 2012 6 30			20,000,000.00
16	2012 3 16		2012 9
12 2012 6 30			
50,000,000.00			2012 5 22
2012 11 22			
(13) 2012 6 30			
25,000,000.00	2012 5 15		2012
11 15			
14 2012 6 30			2,163,881.70
	2011 9 28		2013 6 27
15 2012 6 30			
2,280,000.00	2012 03 19		2012 9
05			
16 2012 6 30			
12,954,910.00	2012 05 29		2012
8 29			
17 2012 6 30			
1,322,493.00	2012 06 05		2012
10 01			
18 2012 6 30			
500,000.00	2012 06 18		2012 12
30			
19 2012 6 30			

2012

<hr/>				
		3.58		3.58
		6.80		

			3.4		3	
5						
2010	7	26			2010	
					1	/2 /3
2010	11	19			2010	
2010	12	6		2010		
2010	12	13			2010	
					2010	12 10
						1,100
2011	7	8			2011	
						1,100
		1,650			6.73	2011 7 8
		2011				
						2011 7 8 ,
						180
2011	8	27			2011	
	112			8		
		2		1		
	129					101
	606.6			2011 12 12		
2011	12	12				606.6
						3,475.82
			625.95			3,689.05

()

Black-Scholes

Black-Scholes

3,689.05

625.95

()

112

8

2

1

129

2012 6 30

		47,465.79
		41,807.83

1 2012 6 30

33,042,716.55

7,654,560.62

2 2012 6 30

26,767,648.91

72,660,683.30

4,616,861.18

3 2012 6 30

2,293,594.34

4 2012 6 30

17,707.04

11,937,707.04

5 2012 6 30

21,371,966.29

7,047,224.73

1,507,295.09

6 2012 6 30

105,614.00

2012 6 30

8	2012	6	30		2,930,298.28		
9	2012	6	30		36,140,000.01		
				650,000.00			
				1,074,068.12			
10				16,078,332.80	9,943,038.73		
				14602	21,900,000.00	16,065,785.84	
					GF-1104)	015	
				31,000,000.00		2011	9
14	2012	9	13				
11				4,482,637.03	2,298,977.31		
				05878	5,530,511.76	2,796,047.27	
					05732	9,962,543.54	
				5,914,967.91		15751	
				21,900,000.00	16,065,785.84		GF-1104)
				015		27,000,000.00	
				17,000,000.00	2012	2	17
				;10,000,000.00	2012	5	17
					2013	3	8
12				50,733,310.63	30,064,963.61		
				05731	21,900,000.00	16,065,785.84	
					GF-1104)	015	
				89,000,000.00			
	2012	1	12	2012	7	12	
13				40,000,000.00			
				40,000,000.00		2012	3
30	2012	9	21	; 50,000,000.00			
				50,000,000.00			
	2012	6	26	2012	12	26	
14				2,634,072.00	2,270,124.24		
				(2005) C.B 9055		8,354,155.95	
				6,986,922.89	427450		
				1,036,153.69	, 900,955.43	457685	

	13,694,341.00	12,006,323.11	
2006	1064	45,313,024.59	33,988,384.80
		19	200900889
2,423,803.44	1,819,367.82		19

	0410030546		0410030765	
0410030519		0410030512		0410030518
	0410030528		0410030536	
0410030535		0410031138		0410030533
	0410030547		0410030532	
0410030530		0410030529		0410030520
	0410030521		0410030517	
0410030516		0410030514		0410030513
			5,652,573.36	
	2010	6	2	2020 6 1
18	10,371,953.19		7,916,425.65	
	31233		04364	12,108,127.50
	10,961,795.82			2008 6-10
			30,000,000.00	
	2011	9	2	2012 9 1
19	1,639,400.76		1,573,824.76	
	62452	1,639,400.76	1,573,824.76	
		62453	1,639,400.76	1,573,824.76
			62454	1,639,400.76
1,573,824.76	(62455) 1,639,400.76
	1,573,824.76			62456
1,639,400.76	1,573,824.76			62457
	1,639,400.76	1,573,824.76		
	62458	1,639,400.76	1,573,824.76	
		62459	1,639,400.76	1,573,824.76
		62460	1,639,353.79	1,573,778.99
			62461	4,435,227.58
4,117,369.43				2010 6-74
			12,000,000.00	
	2012	6	14	2013 6 13
20	2,739,268.00		2,377,197.92	
	03853		1,941,086.00	1,858,230.61
		2009	6-7	; 7,732,543.00

1	105,287,801.84	94.68	17,011,628.46	16.16	115,849,570.07	91.62	15,677,288.25	13.53
3	5,910,399.21	5.32			10,591,706.27	8.38		
	111,198,201.05	100.00	17,011,628.46	15.30	126,441,276.34	100.00	15,677,288.25	12.40
	111,198,201.05	100.00	17,011,628.46	15.30	126,441,276.34	100.00	15,677,288.25	12.40

1

		%			%	
1	65,884,820.37	59.25	3,294,241.02	91,365,182.12	72.26	4,568,259.11
1 2	23,681,063.63	21.30	2,368,106.36	11,679,826.96	9.24	1,167,982.70
2 3	5,206,788.38	4.68	1,562,036.52			
3 4	1,052,300.00	0.95	526,150.00	1,008,674.50	0.80	504,337.25
4 5	1,008,674.50	0.90	806,939.60	11,795,886.49	9.33	9,436,709.19
5						

3

4

5

5

5

6

				(%)
		11,680,000.00	1	10.50
		9,320,000.00	1	8.38
		8,999,995.35	2-5	8.09
		6,457,220.71	1-2	5.81
		6,010,521.24	1	5.41
		42,467,737.30		38.19

7

				(%)
		2,658,577.53		2.39

8

9

()

1

		%		%		%		%
1	994,289,560.79	99.05	472,126.10	0.05	355,652,585.04	96.08	443,145.87	0.12
1 2	4,825,112.23	0.48	482,511.22	10.00	10,163,032.34	2.75	383,772.83	3.78
2 3	3,141,013.83	0.31	942,304.15	30.00	2,665,452.00	0.72	799,635.61	30.00
3 4	557,489.19	0.06	278,744.60	50.00	756,524.20	0.20	378,262.10	50.00
4 5	186,827.60	0.02	149,462.08	80.00	464,451.18	0.13	371,560.94	80.00
5	788,447.18	0.08	788,447.18	100.00	451,634.00	0.12	451,634.00	100.00

1,003,788,450.82	100	3,113,595.33
------------------	-----	--------------

5	788,447.18	0.08	788,447.18	451,634.00	0.12	451,634.00
	18,941,411.79	1.89	3,113,595.33	17,038,707.10	4.60	2,828,011.35

3

	667,826,000.37					
	106,473,266.67					
	93,501,485.24					
	53,534,849.27					
	44,000,000.00					
	14,034,281.30					
	5,292,871.74					
	175,038.44					
	9,246.00					
	984,847,039.03					

3

4

815,449.41

			815,449.41		
			815,449.41		

5

5

5

6

				(%)
	667,826,000.37	1		66.53
	106,473,266.67	1		10.61

	93,501,485.24	1	9.31
	53,534,849.27	1	5.33
	44,000,000.00	1	4.38
	965,335,601.55		96.16

7

8

9

()
1

						(%)	(%)				
	9,800,000.00	12,037,378.59	357,646.14		12,395,024.73	49.00	49.00				
	9,800,000.00	12,037,378.59	357,646.14		12,395,024.73						

	28,809,232.27	28,809,232.27	-28,809,232.27								
	52,215,451.13	52,215,451.13			52,215,451.13	100.00	100.00				
	81,750,000.00	81,750,000.00	75,500,000.00		157,250,000.00	75.00	75.00				130,919,425.31
			3,125,000.00		3,125,000.00	51.00	51.00				
			220,590,000.00		220,590,000.00	85.50	85.50				
	1,069,716,045.78	1,069,716,045.78	249,545,007.90		1,319,261,053.68						344,626,027.49
	8,300,000.00	8,300,000.00	-8,300,000.00								
	8,300,000.00	8,300,000.00	-8,300,000.00								
	1,078,016,045.78	1,078,016,045.78	241,245,007.90		1,319,261,053.68						344,626,027.49
	1,087,816,045.78	1,090,053,424.37	241,602,654.04		1,331,656,078.41						344,626,027.49

()

1

	307,658,102.96	329,305,390.88
	5,335,830.80	5,316,730.24
	266,231,956.93	299,624,091.52

2

	307,658,102.96	266,162,567.41	329,305,390.88	299,496,156.43
	307,658,102.96	266,162,567.41	329,305,390.88	299,496,156.43

3

	307,658,102.96	266,162,567.41	329,305,390.88	299,496,156.43
	307,658,102.96	266,162,567.41	329,305,390.88	299,496,156.43

4

()

	247,253,270.43	118,572,111.53
	357,646.14	-1,968,284.82
	-18,858,839.81	15,601,812.92
	228,752,076.76	132,205,639.63

()

1		
	213,038,295.76	117,555,937.48
	2,435,373.60	3,837,244.42
	4,980,726.52	4,719,869.21
	1,351,107.42	137,759.76
	-42,833.36	40,432.32
“ ”	13,056.66	259,826.78
“ ”		
“ ”		
“ ”	33,641,088.53	13,431,353.11
“ ”	-228,752,076.76	-132,205,639.63
“ ”	-242,988.62	-575,586.66
“ ”		
“ ”	-11,819,660.70	46,086,078.04
“ ”	-645,241,428.13	-415,717,560.33
“ ”	-117,833,935.93	183,472,186.16
	6,259,500.00	14,641,200.00
	-742,213,775.01	-164,316,899.34
2		
3		
	84,915,010.72	54,342,359.04
	74,794,170.09	74,669,672.78

B/â Ä îAu1 "©_Ä"©?;,X?U" Í' ó 3,žE->	
Ô õ úAx H Í' ó 3,ž,X E j	
« ,4£9ùª k,X ,1uC 9	
L8 ÞEÄ ØNM ê,X Jª9ù î ê 9` Í	-813,956.69
Jª0ú ÜM24£ û 3,ž n ,X 3,žNM,Ä	
ãA u	-7,228,423.04
k/â E jNq	1,075,165.15
â D6u ð ,ž E jNq Ä/â â Ä	10,137.44
Ü Au	-6,143,120.45

(`) "C { ,ž}[ž!£6u ,ž Ö

y ó ý#z	t G "C { ,ž)[Ä %Ä	!£6u ,ž Ä Ä	Í !£6u ,ž	/ÖGž!£6u ,ž
& 2 b @ Ì BEí6u6u ð,X " ý#z	5.29	0.18		0.18
7L8M24£ û 3,ž â & 2 b @ Ì				
BEí6u6u ð,X " ý#z	5.60	0.19		0.19

(Ý) @ Ì ?U îAu y><NM,Ä,X Ö ™ %º ž s `;XAÈ â

y><NM,Ä	ó ý -Nq	H ñ -Nq	¬ !")[(%)	¬ s´
h /< B	46,652,490.00	85,941,064.73	-45.72	?U ó ý 1/ß! /< B 4§1k £ á E j 7È
NX ¬! NM	192,102,192.40	77,003,598.86	149.47	?U NX ¬ iC Ä \$ m! r t ž Ü J8x È ¬ ê E j 7È
Jª h !	237,171,229.70	162,885,421.96	45.61	?U ±A•G¥ r t ž Ü J8x È ¬ ê E j 7È
KS ó6u iC	12,395,024.73	20,337,378.59	-39.05	?U 6u iC c 3 E j 7È
ü î 1/ß	66,056,804.34	113,547,655.32	-41.82	?U \$ @ Ì 1M Í ` ä E@ ÍnC {E j 7È
KS ó Y C *ü	715,252.81	350,144.20	104.27	?U Ü J8x È ¬ ê E j 7È
h ¬/< B	622,133,542.77	413,171,629.89	50.58	?U /< B4§1k r t ž Ü J8x È ¬ ê E j 7È
h ¬ ý C	14,323,856.14	2,963,989.16	383.26	?U ó ¥> 5à Au ¨ ý C E j 7È
h ¬6u ý	709,307.09	265,552.21	167.11	?U ó \$ @ Ì Ú4v E j 7È

	111,519,987.61	64,858,877.10	71.94
	690,583,010.74		100.00
	34,401,893.67	4,724,497.19	628.16
			(%)
	42,783,843.87	31,887,905.01	34.17
	149,912,264.35	112,147,180.15	33.67
	56,303,514.10	24,624,860.71	128.65
	-2,234,942.09	6,917,109.32	-132.31
	-7,942,353.86	1,917,919.44	-514.11
	2,914,308.12	1,487,129.17	95.97
	1,842,731.16	885,633.58	108.07
	-404,301.81	-61,772.85	-554.50

	102,909.54		100.00

185,541,917.90 121,723,155.73 52.43

1,470,000.00 -100.00

	581,722.12	101,548.77	472.85
--	------------	------------	--------

		98,983,554.72	-100.00	
	88,388,214.39	55,653,473.43	58.82	
	151,408,335.97	348,863,701.56	-56.60	
	700,000,000.00		100.00	
	10,375,000.00		100.00	
	800,461,907.99	299,090,382.76	167.63	
	81,974,800.98	42,061,822.19	94.89	
	-454,181.08	-183,798.53	-147.11	